

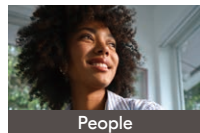


TRULY TOGETHER

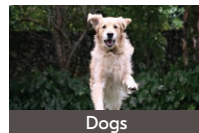
Z 5 II



Next-level, dependable autofocus



People



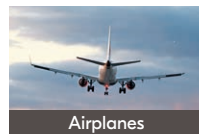
Dogs



Cats



Birds



Airplanes



Cars



Motorcycles



Bicycles



Trains

Intelligent AF subject detection

Like Nikon's flagship models, the Z9 and Z8, the Z5II can identify and track nine types of subjects — people, dogs, cats, birds, airplanes, cars, motorcycles, bicycles, and trains. Powered by the EXPEED 7 image-processing engine, the camera detects and tracks your subjects with speed and precision, so you can compose your shots freely while the camera handles the focusing.



Follow your subject with confidence

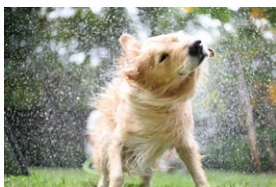
For fast or unpredictable movement, 3D-tracking in photo mode and subject-tracking AF in video mode come in handy. These features help lock focus on your subject, even if it's not one of the nine detectable types, like a hand or a ball.



Ready for unpredictable moments

The Z5II's AF-A focus mode makes focusing easier, as it detects if your subject moves even a tiny bit in any direction and will automatically switch to the optimal focus mode. You'll always be ready for sudden movements.

Never miss a moment in motion



Speed meets clarity

Capture the decisive moment with up to 14-fps continuous shooting. Each frame stays sharp as the autofocus locks on your subject, even in motion.

Capture the speed. Reveal the unseen.

Shoot even faster at approx. 15 fps or 30 fps with the Z5II's high-speed frame capture +* — great for capturing action at just the right instant and in the ideal composition. Combined with the Pre-Release Capture feature, you can capture shots up to 1 second before fully pressing the shutter, ensuring you never miss a moment.

*JPEG files only. Fixed to JPEG [normal]. Use of recommended cards is advised. When high-speed frame capture + is used, the electronic shutter may cause rolling shutter distortion depending on the type of subject and shooting conditions.



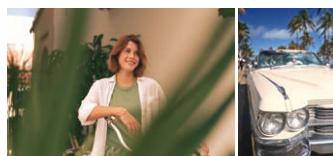
Up to 1 sec. prior can be recorded

Fully pressing the shutter-release button

Unlock new workflows with Nikon Imaging Cloud

Find your colours

Try Imaging Recipes — custom in-camera colour presets from Nikon and renowned creators. Download directly to the Z5II for free from Nikon Imaging Cloud. Whatever the scene, there's a perfect look for you.



Imaging Recipes

Quick access to your favourite looks

Instantly select and preview your Imaging Recipes* or Picture Controls with the dedicated Picture Control button.



*Imaging Recipes must be downloaded beforehand.



Image Transfer

Automatically upload and back up images to cloud storage.



Nikon Imaging Cloud



Firmware Updates

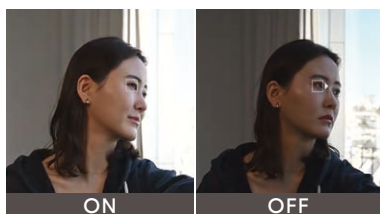
Keep your firmware update to date — all seamlessly through Nikon Imaging Cloud.

Refined portraits, instantly



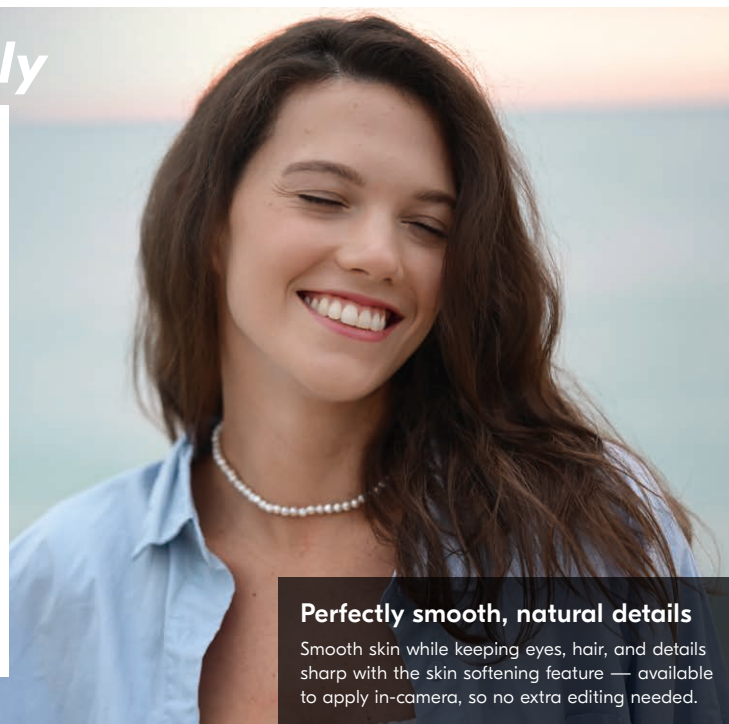
Your portrait vision realised

Render skin beautifully with rich, natural tones and fine detail using the Rich Tone Portrait Picture Control — ideal for lifelike looks in-camera that work as a great base for post-production editing.



Optimised lighting for faces

Automatically adjust exposure for faces with matrix metering face detection, ensuring natural-looking portraits even in tricky lighting.



Perfectly smooth, natural details

Smooth skin while keeping eyes, hair, and details sharp with the skin softening feature — available to apply in-camera, so no extra editing needed.

Creativity shines in the dark



Steady shots, even in low light

Capture sharp, clear images with minimal blur, even handheld. The powerful 7.5-stop* vibration reduction enhances your creativity in low light or during long exposure shots. What's more, focus point VR reduces motion blur even near the edges of the frame, enhancing flexibility in composition.

*Based on CIPA 2024 Standard. Yaw/Pitch/Roll performance when using the NIKKOR Z 24-120mm f/4 S (telephoto end, NORMAL mode).



Focus beyond the darkness

Focus with confidence, even in dimly lit environments. With AF detection down to -10EV*, the Z5II detects eyes and faces even in extremely dark situations

*In photo mode using single-servo AF (AF-S), focus point position center at ISO 100 equivalent and a temperature of 20°C/68°F with an f/1.2 lens.



Exceptional high ISO sensitivity

Achieve sharp, clear images with minimal noise while retaining details — even in challenging lighting conditions — thanks to a wide ISO range of 100-64000*.

*A maximum ISO of up to 51200 for video.

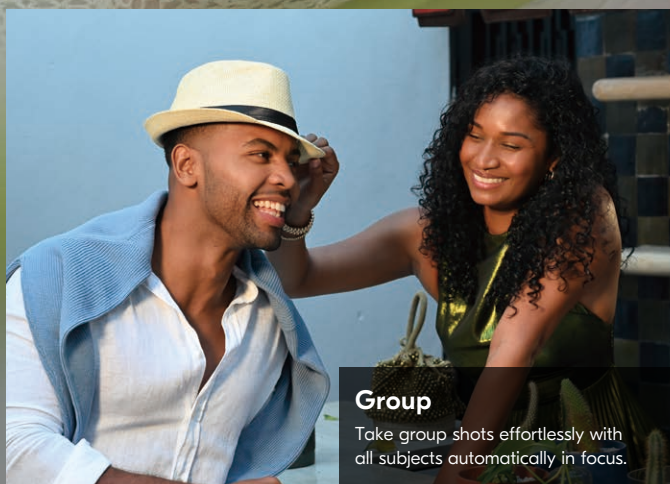
Let technology take the lead

Let the Z5II's Auto shooting mode handle the settings for you. Powered by Nikon's AI deep learning, it quickly recognizes subjects and scenes and optimises aperture, shutter speed, and ISO accordingly.



Single subject

Get beautifully blurred backgrounds when shooting single-subject portraits.



Group

Take group shots effortlessly with all subjects automatically in focus.



Action

Keep fast-moving moments sharp, as the camera detects motion.

Redefining cinematic excellence



N-RAW (N-Log)

FILM BIAS OFFSET

Maximise flexibility with N-Log

Shoot in N-Log for more color information and 13+ stops of dynamic range, giving you further freedom in the post while reducing the chance of over or under-exposing.

Professional-grade RED LUTs

When shooting in N-Log, you can explore four Creative LUTs developed in collaboration with RED. Download them for free to instantly achieve professional, cinematic looks in post.

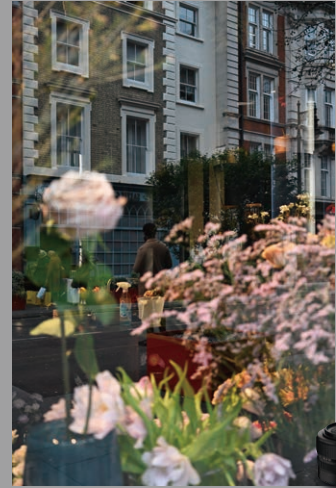
*This image was created using the RED LUT "FILM BIAS OFFSET", with additional colour grading and correction applied.

NIKKOR Z *Explore wider creative possibilities*



NIKKOR Z
24-70mm f/4 S

The Z5II's S-Line kit lens delivers top-tier image quality with a constant f/4 aperture. Lightweight and travel-friendly, it's ideal for any shoot.



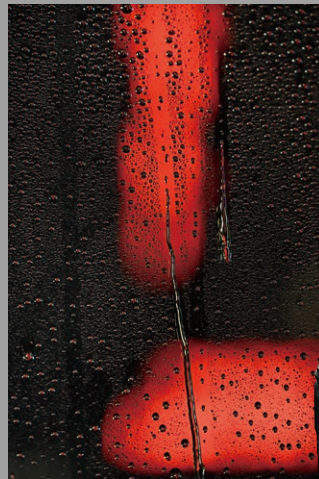
NIKKOR Z
24-50mm f/4-6.3

A versatile lens for everyday moments, capturing sharp shots from wide scenes to close-ups — perfect for travel shots and street snaps.



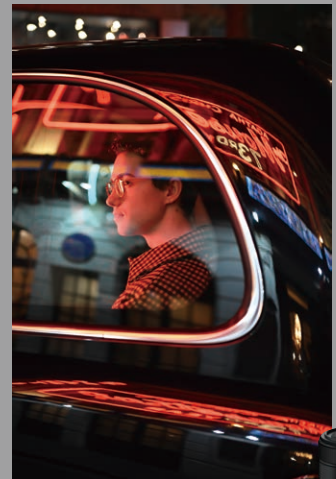
NIKKOR Z
24-120mm f/4 S

A portable, travel-ready design meets versatility for every scene. The S-Line quality delivers superior resolution across all focal lengths, even in backlit conditions.



NIKKOR Z
24-200mm f/4-6.3 VR

With a broad zoom range and built-in VR, this lightweight lens delivers sharp, stable shots from landscapes to distant subjects.



NIKKOR Z
40mm f/2

Super compact and versatile, it's perfect for almost any shooting situation. The fast f/2 aperture works brilliantly in low light and creates beautiful bokeh.



Join the Nikon family!

Create your Nikon account to stay updated with the latest news, events, and promotions.

Create a Nikon account



TO ENSURE CORRECT USAGE, READ MANUALS CAREFULLY BEFORE USING YOUR EQUIPMENT. SOME DOCUMENTS CAN BE DOWNLOADED FROM downloadcenter.nikonimglib.com.

Specifications and equipment are subject to change without any notice or obligation on the part of the manufacturer. April 2025 © 2025 Nikon Corporation

Nikon Singapore Pte. Ltd.

18 Tai Seng Street, #04-08, 18 Tai Seng, Singapore 539775
www.nikon.com.sg

Nikon Hong Kong Ltd.

Unit 2001, Level 20, Tower II, Grand Century Place, 193 Prince Edward Road West, Mongkok, Kowloon, Hong Kong
www.nikon.com.hk

Nikon Australia Pty Ltd.

Suite 501, Level 5, 5 Rider Boulevard, Rhodes, NSW 2138, Australia
www.nikon.com.au

Nikon India Private Limited

Plot No. 71, Sector 32, Institutional Area, Gurgaon 122001, Haryana, India (CIN-U74999HR2007FTC036820)
www.nikon.co.in

Nikon Sales (Thailand) Co., Ltd.

1 Empire Tower, 45th Floor, River Wing East, South Sathorn Rd, Yannawa, Sathorn, Bangkok 10120, Thailand
www.nikon.co.th

Nikon Middle East FZE

Level 14, Jafza Views 19, P.O. Box 261908, Dubai, UAE
www.nikon-me.com

NIKON CORPORATION

1-5-20, Nishi-oi, Shinagawa-ku, Tokyo 140-8601, Japan
www.nikon.com

[@nikonasia](https://www.instagram.com/nikonasia)

[@nikonasia](https://www.instagram.com/nikonasia)

